

# AP 700

ABSOLUTE ENCODER IP66/IP67 – M/S

IP 66/67 – M/S

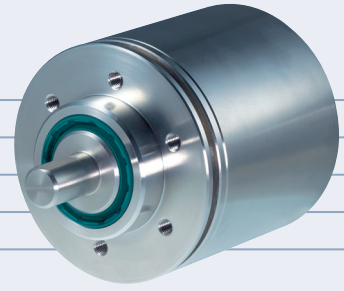
CENELEC & IEC Approvals

Heavy Duty Construction

Up to 12 Bits (4096)

5 Volt TTL or 8 to 30 Volts

Gray Code or Binary Code



## APPROVALS/CERTIFICATIONS

EN 50014	1197 E incl. A1 + A2
EN 50018	2000 E

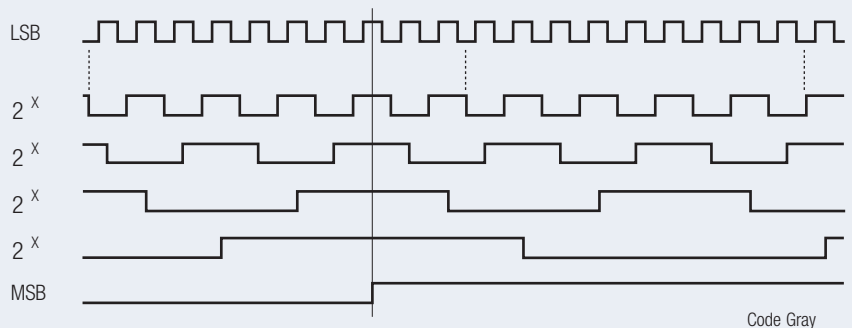
## ELECTRICAL SPECIFICATIONS

Supply Voltage	5 Volt TTL or 8 to 30 VDC
Current Consumption	100 mA (max)
Output Circuit	Push-Pull, RS 422A
Impulse Frequency	200 kHz (max)
Logic Level (high)	V <sub>cc</sub> - 0.7 Volt
Logic Level (low)	0.25 Volt (max)
Short Circuit Protection:	100 %
Cable	Mechanically and Chemically Resistant Flame Retardant – Screened

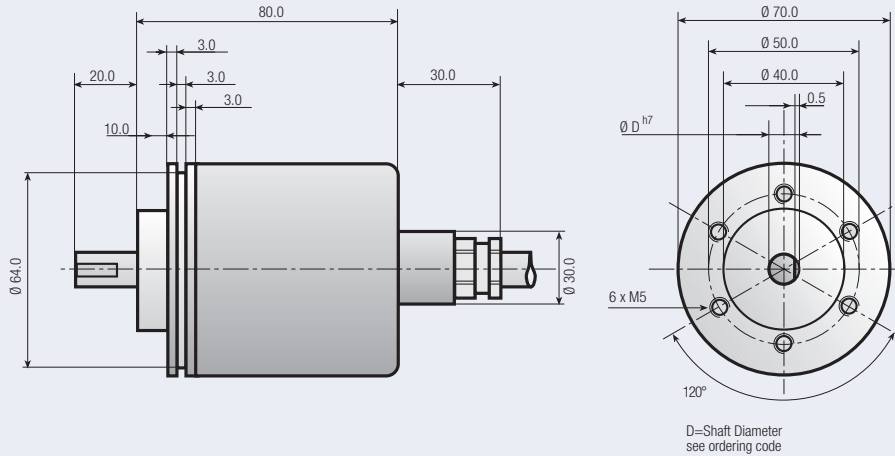
## MECHANICAL SPECIFICATIONS

Cover	316 Stainless Steel
Body	316 Stainless Steel
Shaft	316 Stainless Steel
Speed	6000 RPM (max)
Torque	> 0.4 Nm
Loading	Axial 60 N, Radial 50 N
Protection	IP 66/67 – M/S
Temperature	-20°...+70°C (-4°...+158°F)
Weight	(2.866 lb) 1300 g

## OUTPUT SIGNALS



Drawing available as:  
dxf, iges, step, sld file



**ORDERING CODE**

**AP 700** -         -

a      b      c      d      e      f      g      h      Pulses Per Revolution

- a Group Function**  
AP=Absolute Encoder IP66/IP67
- b Basic Series Number**  
700
- c Shaft Size**  
10=10 mm  
12=12 mm
- d Mechanical Options**  
0=None

- e Connector Type**  
0=2 mtr. (6 ft) Cable
- f Connector Location**  
A=Axial
- g Output Signals**  
E=Binary <->  
F=Gray <->
- h Output Circuit Type**  
1=TTL (5 VDC)  
5=Push Pull 8 to 30 VDC

**Note:** Special functions and designs will be designated by a 4 digit code at the end of the part number. Consult factory for further details

**CONNECTIONS**

Function	Cable Colour Code	Function	Cable Colour Code
0 Volt	white	2 <sup>6</sup>	black
+ Volt	brown	2 <sup>7</sup>	violet
2 <sup>0</sup>	green	2 <sup>8</sup>	grey/pink
2 <sup>1</sup>	yellow	2 <sup>9</sup>	red/blue
2 <sup>2</sup>	grey	2 <sup>10</sup>	white/green
2 <sup>3</sup>	pink	2 <sup>11</sup>	brown/green
2 <sup>4</sup>	blue	Reset	yellow/brown
2 <sup>5</sup>	red	<->	white/gray